

Customer :

customer

Customer part :

customer part

Comment :

Comment

S1=0.03

S2=0.29

Tmax=433

Tp S2=472.0

PI=0.09

HI=41

Sample =8918.6

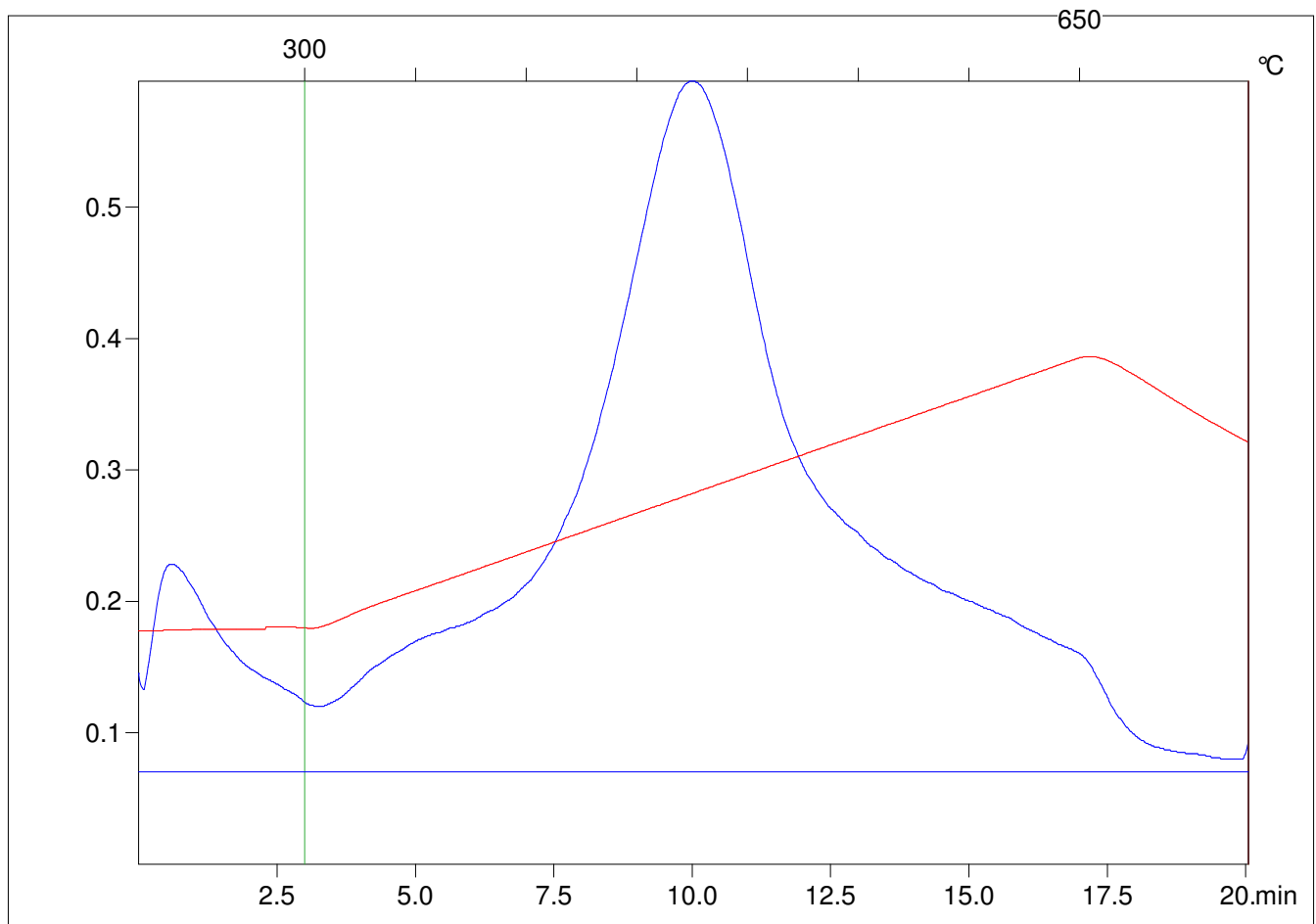
Method =Bulk Rock

Cycle=Basic

KFID(10*9)=1167

Qty =70.6

TOC=0.71



C:\VINC\PK141015\PK057.R00 : FID pyrolysis graphic

State

Pyro Status

Oxi Status